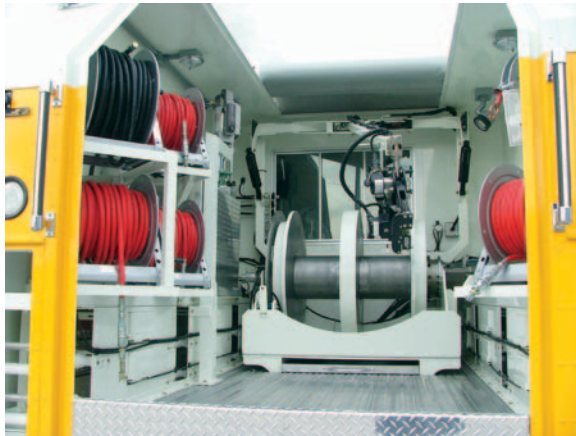


E-Line Truck | Open Hole Tandem Axle



Technical Specification

- Dim:** Van Body Dim: 272 1/2" L x 101" W X 80" Interior H
- Winch:** 25,000' of 5/16" Seven conductor Line
Direct Drive System, Hydraulic Applied Braking.
- Hydraulic:** PTO Driven Closed loop Drive System
Four Speed Shiftable Capability
Open Loop Aux. Hydraulic System for operating brake, side to side spooling, and gear shifting.
- Measuring System:** Benchmark Wireline(Kerr) Open Hole Measuring system, with instrumentation panel or your preferred system.
- Chassis:** Customer can choose a tandem axle chassis
- Generator:** Your choice of 10KW to 14KW Hydraulic Generator.
- Wireline Speed:** 3 fpm to 1400 fpm
- Controls & Gauging:** Electrical over Hydraulic Controls. Parameters Adjustable via laptop.

Drawing

